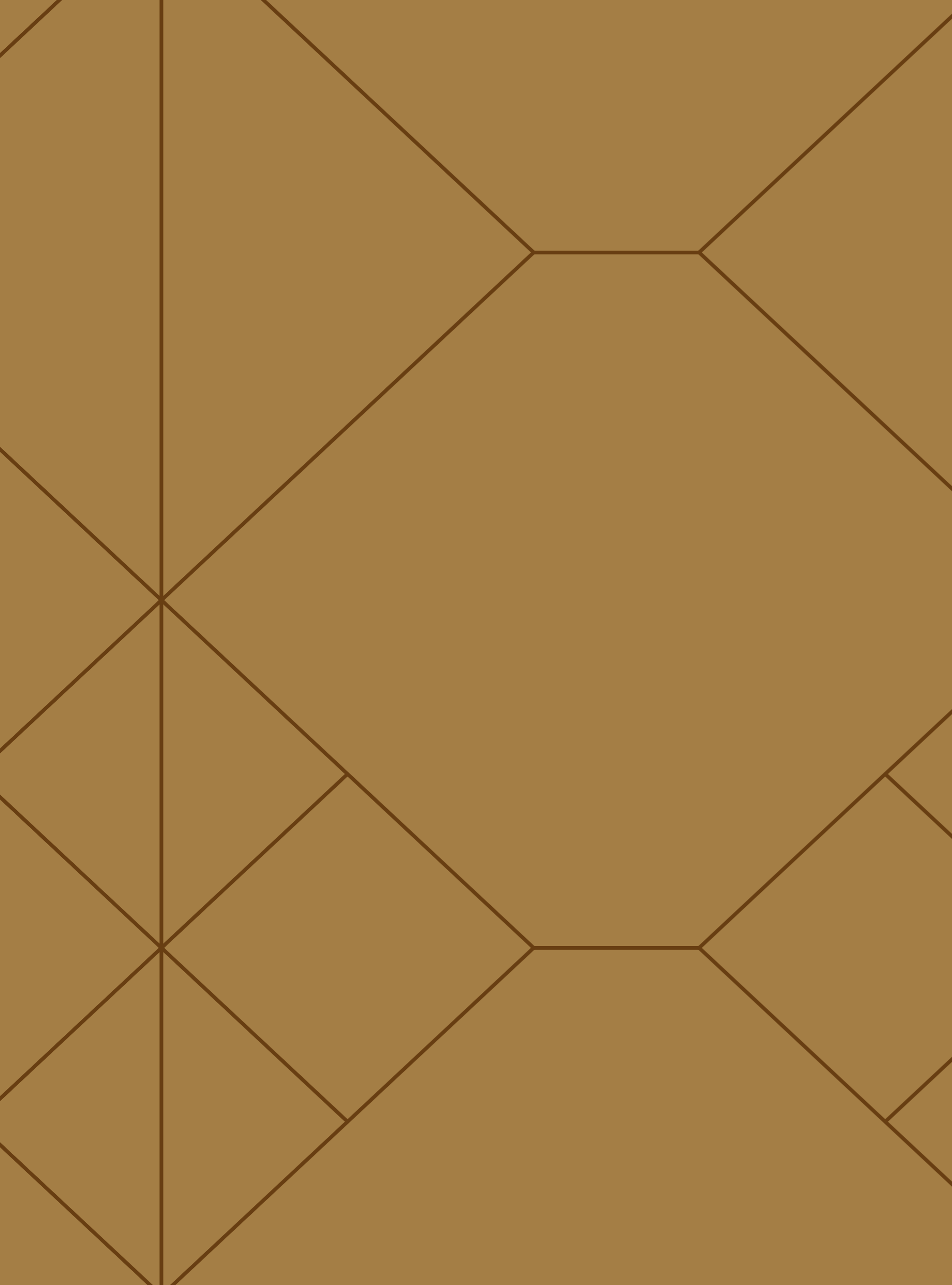




PARAGON

QUEEN STREET MELBOURNE



EXPERIENCE MASTERY

318 QUEEN STREET, MELBOURNE



WELCOME TO MELBOURNE MASTERY

CONTENTS

09

PREFACE

THE LOCATION

15

CHAPTER 01

CULINARY MASTERY

ADAM D’SYLVA

MELBOURNE

FOOD & BEVERAGE

CULTURE

LEISURE

EDUCATION

PARKS & GARDENS

39

CHAPTER 02

MELBOURNE MASTERY

NONDA KATSALIDIS

PARAGON

ARCHITECTURE

THE RESIDENTS’ SPACES

THE PENTHOUSES

THE RESIDENCES

67

CHAPTER 03

THE TEAM

FENDER KATSALIDIS ARCHITECTS

PAUL BANGAY

BEULAH INTERNATIONAL & FAJARBARU

A MASTER OF INFLUENCE

In a city that leads the world, Paragon is an exemplary lifestyle masterpiece. With a name that represents perfection, Paragon is a model of excellence for a refined metropolitan life.

At an elevated vantage point, experience the magnitude of elite Melbourne living. Ambitious design and visionary technology bring together an artistically conceived living statement by one of Australia’s pre-eminent architects, Fender Katsalidis, whose ground-breaking projects have been widely awarded for evolving Melbourne’s built landscape.

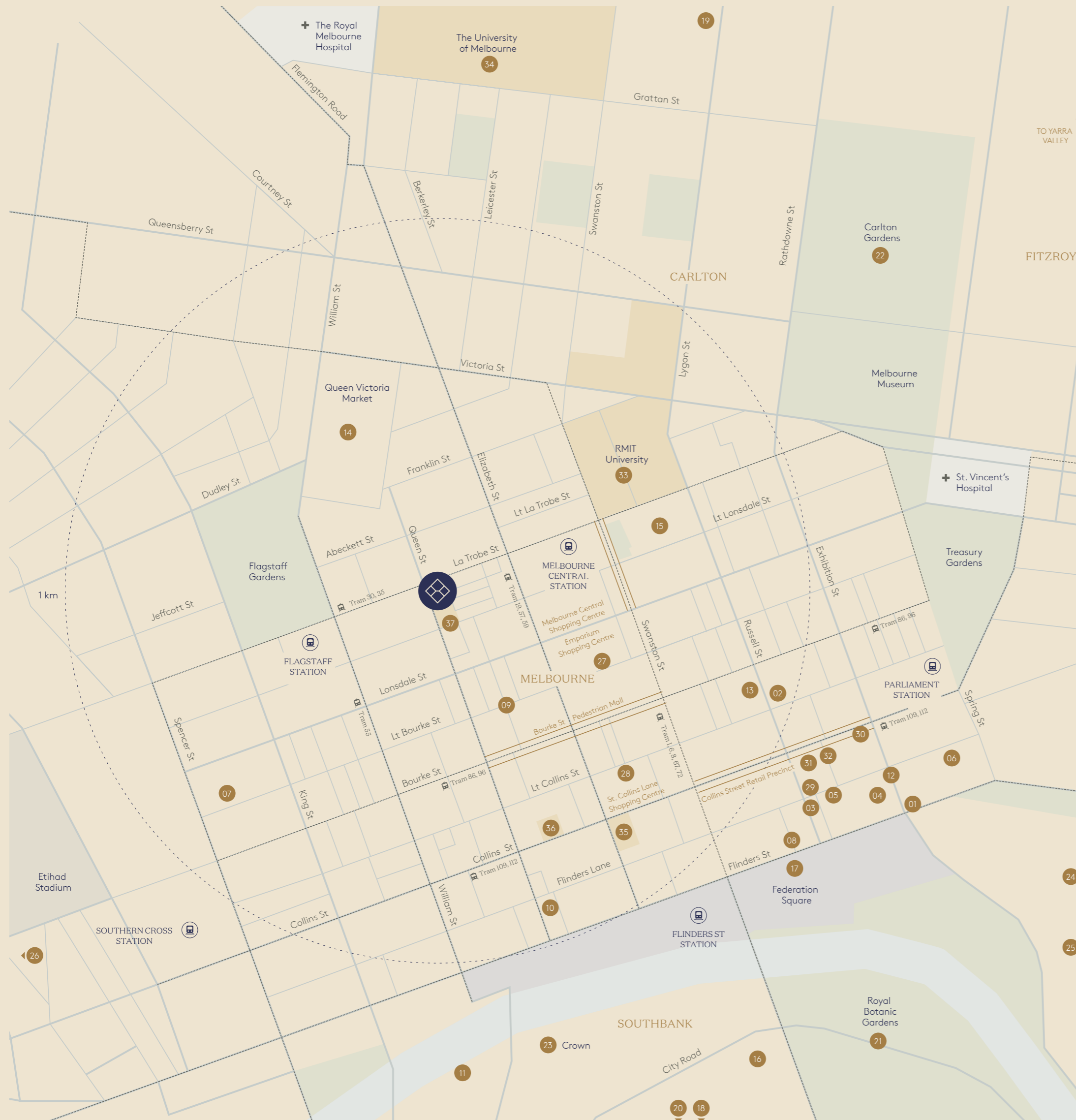
Utterly unique, yet effortlessly integrating within the cityscape, Paragon graces the centre of Melbourne’s skyline with a shimmering façade of anodised metal, entwined around sheets of glazing, reflecting the city it overlooks.

At a privileged address in one of Melbourne’s most prestigious neighbourhoods, the design is a transformative statement of boutique skyrise living. Elegant and tranquil, a selection of large, individually conceived residences and penthouses embrace materiality and refined detail and unobstructed Melbourne views.

Paragon is further defined by a series of breathtaking resident amenities, a luxurious social landscape for lounging, entertaining and escape, set around Melbourne’s first urban forest, a sanctuary in the heart of the city.



Artist Impression



EXPERIENCE MASTERY

CULINARY

Bars & Restaurants

- 01. The Press Club
- 02. Embla
- 03. Coda
- 04. Tonka
- 05. Chin Chin
- 06. Cumulus Inc
- 07. Higher Ground
- 08. MoVida
- 09. French Saloon
- 10. Maha
- 11. Dinner by Heston
- 12. The French Brasserie
- 13. The Rooftop at QT

Market

- 14. Queen Victoria Market

CULTURAL

- 15. State Library of Victoria
- 16. National Gallery of Victoria (NGV)
- 17. Australian Centre for the Moving Image (ACMI)
- 18. Australian Centre for Contemporary Art (ACCA)
- 19. Ian Potter Museum of Art
- 20. Melbourne Theatre Company (MTC)

LEISURE

Parks & Gardens

- 21. Royal Botanic Gardens
- 22. Carlton Gardens

Sport & Entertainment

- 23. Crown
- 24. Melbourne Cricket Ground (MCG)
- 25. AAMI Park
- 26. Docklands

Retail

- 27. Emporium Melbourne
- 28. St. Collins Lane
- 29. Chanel
- 30. Prada
- 31. Louis Vuitton
- 32. Bulgari

EDUCATION

- 33. RMIT University
- 34. The University of Melbourne
- 35. Monash University Business School
- 36. La Trobe University City Campus
- 37. Victoria University City Queen Campus

✚ Hospital

Education

Parks & Gardens

Tram routes

Train stations

CHAPTER 01

CULINARY MASTERY

ADAM D'SYLVA

HEAD CHEF OF CODA
AND TONKA RESTAURANTS





CULTIVATING GOOD TASTE

Adam D’Sylva holds a highly regarded reputation in the alumni of chefs, restaurateurs and hospitality names that have propelled Melbourne to the forefront of a culinary scene where chefs are the new celebrity.

Young Chef of the Year and a slew of awards later, Adam is widely recognised for evolving Melbournian dining experiences, yet remains understated, preferring to let his work walk the talk. And it does in spectacular form. As part owner and executive chef of two lauded CBD restaurants, both awarded chef’s hats within a year of opening, he is challenging established concepts and re-imagining modern menus with an open minded confidence that is thrilling diners from around Australia and the globe.

NURTURE OR NATURE

Most likely nurture. With my Indian Italian heritage, food was always going to be a family focus. I grew up in a household where family feasts were the norm. Bowls of rice and curry, home made gnocchi, salamis and sauces were our daily fare.

From 3 years old I was already playing and cooking in the kitchen with my mum and nonna and by the age of 10, food had become a passion. My formal training took me in and around Melbourne and later around the world, working with some incredibly talented chefs.

In Melbourne, being head chef at Longrain and Pearl was the precursor to heading out on my own.

DESCRIBE YOUR STYLE

Modern Asian seems to be associated with both of our restaurants Tonka and Coda however, working to a particular ‘style’ can be restrictive.

We’re inspired by those flavours that may inform some of what we do and aspects of Asian cuisine that infuse our modern dishes but there are other menu items that have no connection to Asia.

It’s more about developing dishes that interest you and using that to progress a diner’s experience. It’s a combination of menu, the restaurant environment and service that forms the overall experience.

A.D.

“It’s difficult to imagine spending long periods of time anywhere else...”

MASTERING A CRAFT

There’s always room to learn more and progress your craft, whatever it might be. Staying current and relevant is part of the process but on a personal level, its the respect and passion for my work that drives me. Staying in touch with others in the industry, growing relationships, research and curiosity all contribute to expanding your knowledge base which is essential. I’m usually observant of what is around me. It helps to provide inspiration for a project or encourages a new way to approach a challenge.

Developing a sound work ethic paves the way to excelling at anything. It starts as simply as showing up to work on time, consistently putting in the long hours, being flexible and dedicated to doing the best you can at the time. Making mistakes and learning from them is part of it. It’s good to have your views challenged, it will push you out of your comfort zone and force you to make different decisions and take new approaches to an old problem.

RECIPE FOR SUCCESS

Working with a good team is really important. We all come from different angles and bring different talents to the table and the product, any product, ends up being better for it. The accolades are great in getting your name out there but it’s really the daily work you do to make sure you maintain a consistently high standard that will generate success. We don’t go out there trying to be different, we just follow our passion to explore new techniques. Often it involves honing down the process to reveal authentic flavours and how best to bring these to the fore. Something like bringing a sense of honesty and origin to what we do, be it across the menu, the fit-out, brand design or service.

There’s always scope to deliver something new in Melbourne, the city loves to be surprised with a new take on anything! Tonka’s approach to refresh Indian dining has been really well received. It’s the first Melbourne restaurant to take this direction with Indian food. Traditional pakora evolves with soft shell crab and our curry rubbed scallop with parsnip and pickled rhubarb takes a step away from the heavy handed spices that are traditionally associated with Indian food.

INSPIRATION

Inspiration can strike anywhere at anytime. It can be as direct as something that another chef is doing, a home cooking show or a magazine. Or as obscure as something I see on the street, a piece of art, a movie, a conversation that gets me thinking. Travelling and experiencing other cultures is a regular source of inspiration, there are so many people that are pushing boundaries in simple ways; it’s motivating to be a part of that creative aspect of the industry.

Roaming the markets is a great incentive to look at fresh produce in a new light. Local producers here in Victoria and Northern New South Wales are incredibly passionate and driven to grow some exceptional produce. This has a flow on effect, motivating us to explore the beauty of seasonal produce and champion natural flavours with minimal intervention.

WHY MELBOURNE

Melbourne’s options for going out, dining or drinking, are endless. The fine dining establishments are second to none but there are also so many surprising places that deliver on taste and creativity – it keeps the city progressing. You don’t have to go out and spend big money at restaurants with impeccably prepared plates. There are some inventive little eateries that focus on honest fresh flavours that are outstanding. The standard of living that Melbourne affords makes it difficult to imagine spending long periods of time anywhere else. Travel is an important part of my life but coming back here is always on the itinerary.

Melbourne’s small bar culture and relaxed dining spaces are as up to the task as its big name restaurants. I’ll be heading down Victoria Street for pho one day then at Flower Drum for a long lunch the next. Little hole-in-the-wall cafés serve up some original brews to raise the bar for a coffee on the run. Don’t let size and looks fool you! The sheer diversity and affordability of Melbourne’s dining scene coupled with that competitive energy and the drive to keep exploring new ways to do things is all part of the picture. The city is full of over achievers who don’t take themselves too seriously – I think that sets Melbourne apart.



Coda



Higher Ground

CULINARY MASTER

Melbourne prides itself on an international culinary reputation fueled by home-grown goodness.

Honest fare, fusion cuisine, Michelin Star dining and hawker halls are all on the menu, any given day, across the eat streets of Melbourne.

A proud, multicultural pedigree has spawned an appetite for the good life and the city's epicurean tastes are second to none.

Defined culinary precincts like Chinatown, Lygon Street's Little Italy, Victoria Street's Vietnamese and Sydney Road's Middle Eastern mecca have influenced and inspired thousands of cafés and modern dining establishments that have found a home in Melbourne.



Tonka



Queen Victoria Market



The Press Club



The French Brasserie



Arts Precinct



Flinders Street Station

THE WORLD WATCHES MELBOURNE

Melbourne is a modern lifestyle edit. A rich fusion of historic architecture and soaring skyscrapers, riverside promenades, enterprise and entertainment.

Highly educated and culturally diverse, its ambitious community sets new standards, propelling Melbourne to become a world leading lifestyle destination.

The city’s achievements are unmatched. Fashion cuisine, the arts and sporting prowess are celebrated across an endless calendar of international sporting events, concerts and shows, watched by the world.



Yarra River



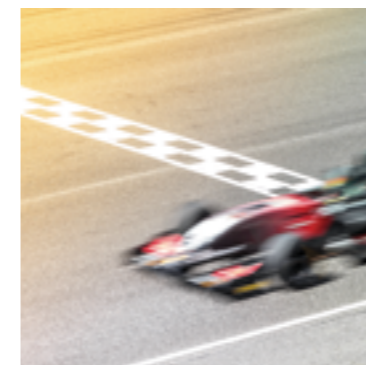
Tonka



MCG



Federation Square



Melbourne Grand Prix



Australian Open



The University of Melbourne

HIGH ACHIEVERS

Melbourne's residents are Australia's most highly educated. The city's universities, colleges and research centres attract a worldly contingent of scholars; the brightest and best in their fields.

Just minutes from Queen Street, The University of Melbourne is Australia's leading tertiary institution, ranked amongst the world's top 40.

Even closer to home, RMIT widely acknowledged as the nation's foremost for Art and Design is ranked in the world's top 20 universities, less than 50 years old.

From grand colonial buildings and stately libraries to modern centres for learning, the city hums with the unrestrained optimism of its student scene.



The University of Melbourne



Royal Botanic Gardens



Chin Chin



The French Brasserie

LANEWAY CULTURE

Discreet and free spirited, Melbourne's laneways are an endless source of creative inspiration.

A captivating gallery of street art colours, its cobblestone alleyways and lanes where hidden doors and unassuming entries lead to the city's coolest bars and rooftop clubs, its tiny teahouses, cantinas and restaurants.

The city's creative soul drives its authenticity with festivals, theatre, exhibitions and performances in a year round showcase of art and culture from around the globe.



ACMI



ACCA



Chanel



St. Collins Lane

CLASSIC STYLE

Melbourne’s grand emporiums and boutique fashion houses are a runway of international and local fashion. From affluent, Collins Street’s Parisian quarter, where designer hotels, haute-couture and private clubs are the order of the day, to moody style-soaked laneway studios, the city’s status as a classic style icon is undisputed.



Prada



Maha



The Press Club



Crown



French Saloon



NGV International



Docklands



Carlton Gardens



Capital City Trail

NATURAL BEAUTY

A cool green escape from the urban hustle, Melbourne’s historically significant parks and gardens deliver an ever-changing seasonal landscape of towering trees, ornamental lakes, winding paths and flower filled designs.

Breathing life into a humming metropolis, pockets of landscaped greenery and expanses of lush, historic parkland naturally enhance its riverside promenades and city centre.

From century old elms offering leafy canopies over endless pathways, to expanses of grassy spaces for sports and recreation, Melbourne’s picturesque outdoor spaces encourage an active lifestyle in one of the world’s cleanest environments.



Royal Exhibition Building – Carlton Gardens



Royal Botanic Gardens

CHAPTER 02

MELBOURNE MASTERY

NONDA KATSALIDIS

FOUNDING DIRECTOR OF
FENDER KATSALIDIS ARCHITECTS





ARCHITECT OF CHANGE

Widely awarded and recognised as one of Australia’s leading architects, Nonda Katsalidis is renowned for his seamless integration of architecture and art. Nonda and Fender Katsalidis co-founder Karl Fender are industry pioneers who have advanced new designs and processes that continually redefine the city’s built landscape. Fender Katsalidis’ architecture has been gracing Melbourne’s residential landscape for decades with each contribution paving the way for a new approach to city living.

From the CBD’s first purposed-designed apartment building, to Melbourne’s then tallest residential tower and Hobart’s famous Museum of Old and New Art (MONA), Nonda has been a champion of new technology and methodologies in architecture. His inventive approach continues to inform the design of some of the city’s most notable buildings and his influence, both in Australia and overseas, has brought significant change to the industry and its outlook.

WHY ARCHITECTURE

Being an immigrant back in the day where stereotyping was the norm, my teacher advised my parents to send me to a tech school so I could follow a trade.

I was always drawn to design at school and enjoyed hands-on subjects like woodwork but defied my teacher’s expectations and went on gain a degree in architecture at Melbourne Uni.

Living with my parents in inner-city Melbourne, I began my career designing cafés and restaurants in Carlton and around the city.

Melbournians recognize and appreciate master craftsmanship and innovative design so it’s always rewarding to work here. We look at each project and consider the context of what it is and what it can be, going beyond the strictly functional concerns to explore how we can make a greater contribution both aesthetically and functionally.

We think about the public nature of the building and how that can be enhanced, then how the spaces within can enliven the experience of being there.

MASTERING A CRAFT

I don’t think you’d ever set out to be a master at what you do. Outcomes are usually informed by your love of your craft.

A deepening interest and passion for what you do naturally drives you to push boundaries and stretch limits, underpinned by a practical and economic grounding.

Determination and persistence play a role but there also needs to be that level of empathy and sensitivity to the needs of the people you are working for. Architecture also requires that certain degree of flexibility, to take on criticism and deliver creative solutions from that point.

We built the Melbourne Terrace Apartments in 1994, which have recently been listed as historically significant. At the time we were simply building to meet a need using a clever approach. The design later turned out to be one of the first purpose-designed apartment buildings developed in the city centre. It wasn’t intentional – with architecture you try different approaches with no idea it may be of significance later – it’s more a drive to do the very best in a given environment and we continue to do that today.

INSPIRATION

Look around most CBD streets in Melbourne and you’re witness to a grand legacy of architecture.

From a personal standpoint, one of the most inspiring things about the city is its extensive range of 19th Century and early 20th Century architecture.

There are some exceptional examples around the city. Not just of landmark buildings like the Royal Exhibition Building, the State Library or Flinders Street Station, but some hidden heritage buildings that are not as grand in size but just as inspiring in detail.

Europe’s modernist movement and its courageous break from the traditions and norms of the day has been another source of inspiration that influences some of our approaches today. I’m also drawn to the physicality of construction, it’s constraints and opportunities to develop solutions and realise new design directions. I feel connected to progressing Melbourne’s architecture, being part of the city’s built landscape and contributing to its liveability.

PARAGON

Every site is different and we look to capitalise on every opportunity it offers to create buildings that sit well within each context while considering human scale and the ambitions of those who will live there.

With Paragon, we explored use of a beautiful corner site and, taking into account its history, we juxtaposed the old and new. We played with the surface treatment to draw in aspects of the Celtic Club heritage, developing a diagonal grid across the reflective surface.

The small footprint of the site inspired us to evolve a north facing, slender pencil profile for the building, imparting a very modern metropolitan aesthetic, suited to its central CBD address.

Paragon is not just another glass box. It sits at a naturally high point in the city and, although it rises to 48 levels, it has a deliberately small-scale residential density, with a maximum of 6 apartments per floor. The site restrictions mean that the floor plates are not as deep as in typical apartment developments, so we can allow for greater levels of sunlight penetration and excellent views all around. Most of the apartments contain two bedrooms and the ratio of apartments gaining corner views is impressively high.

Two entire floors are dedicated to premium residential amenities. In-between, we’ve sandwiched a third floor to allow us to incorporate a spectacular, three storey high urban forest within the design. We’ve positioned the gym, pool and residential entertaining areas with a view to allowing greater exposure to this enormous conservatory-like space which is intrinsic to the sense of sanctuary we are trying to create for the residents.

MELBOURNE’S CHANGING LANDSCAPE

The biggest change I’ve witnessed is Melbourne’s population growth. As Australia’s fastest growing city, its density, infrastructure and liveability offer some great opportunities for architects to build sustainably and with intent to deliver designs that remain relevant across generations.

The city’s cultural complexity and variety is at the heart of Melbourne living. It’s a festival city with an incredible international sports program and extraordinarily high standards in food and fashion.

I think Melbourne is more renowned for, and defined by, the talent and creative flair of its population rather than its topography. While the tyranny of distance that separates us from the rest of the world may have diminished in recent times, we still hold on to that advantage. It gives us our pristine environment and a high level of liveability that remains our biggest asset.

N.K.

“Design should appreciate a site’s architectural legacy, then evolve it by instilling modern conveniences and refinement. Attention to craftsmanship and flawless detail will contribute to developing a living statement for generations to come.”

BUILDING A LEGACY

Set on a natural rise, in one of Melbourne’s best-connected neighbourhoods, architecture goes beyond aesthetics to tell a narrative of a city’s past, present and future. The historical significance of the site informs and anchors the design as crafted artisan metal work weaves a geometric, Celtic inspired pattern across curtains of glass to forge an entirely new identity; a global vision for city living that transports its residents into a calm, elevated and private world by embracing refined organic materials and luxuriant natural spaces to distinguish itself from the city below.

Purposefully boutique, Paragon will be one of Melbourne’s most notable lifestyle destinations. The architecture maximises views allowing the majority of residences prized corner vistas while limiting density to between four and six residences per floor, and two penthouses occupying the topmost, 48th level. Two floors are dedicated to a myriad of resident amenities to rival the world’s most exclusive luxury hotels.

Referencing Melbourne’s abundant green spaces, a three storey high urban forest is an conservatory-like feature, set within the building. It offers a wealth of botanical beauty featuring restful and regenerative places to unwind or entertain unlike anything Melbourne has experienced before.

At ground level, the heritage listed Celtic Club is a respected element of the design, carefully restored and retained while the interiors have been upgraded to include a contemporary bar, restaurant, lounge and outdoor terraces. Adjacent, Paragon’s impressive lobby offers a distinct sense of arrival, a private and indulgent conduit between Melbourne’s busy streetscape and a private world of tranquillity within. Premium level security technology underpins entry to all areas including remote access underground facilities for car and bicycle parking and additional storage.



Artist Impression

Paragon



Artist Impression

Residents' lounge

RESIDENTS' SPACES

PREMIER ENTERTAINING

Five floors above a stately lobby entrance, a landscape of social spaces introduce sophisticated design to modern Melbourne entertaining.

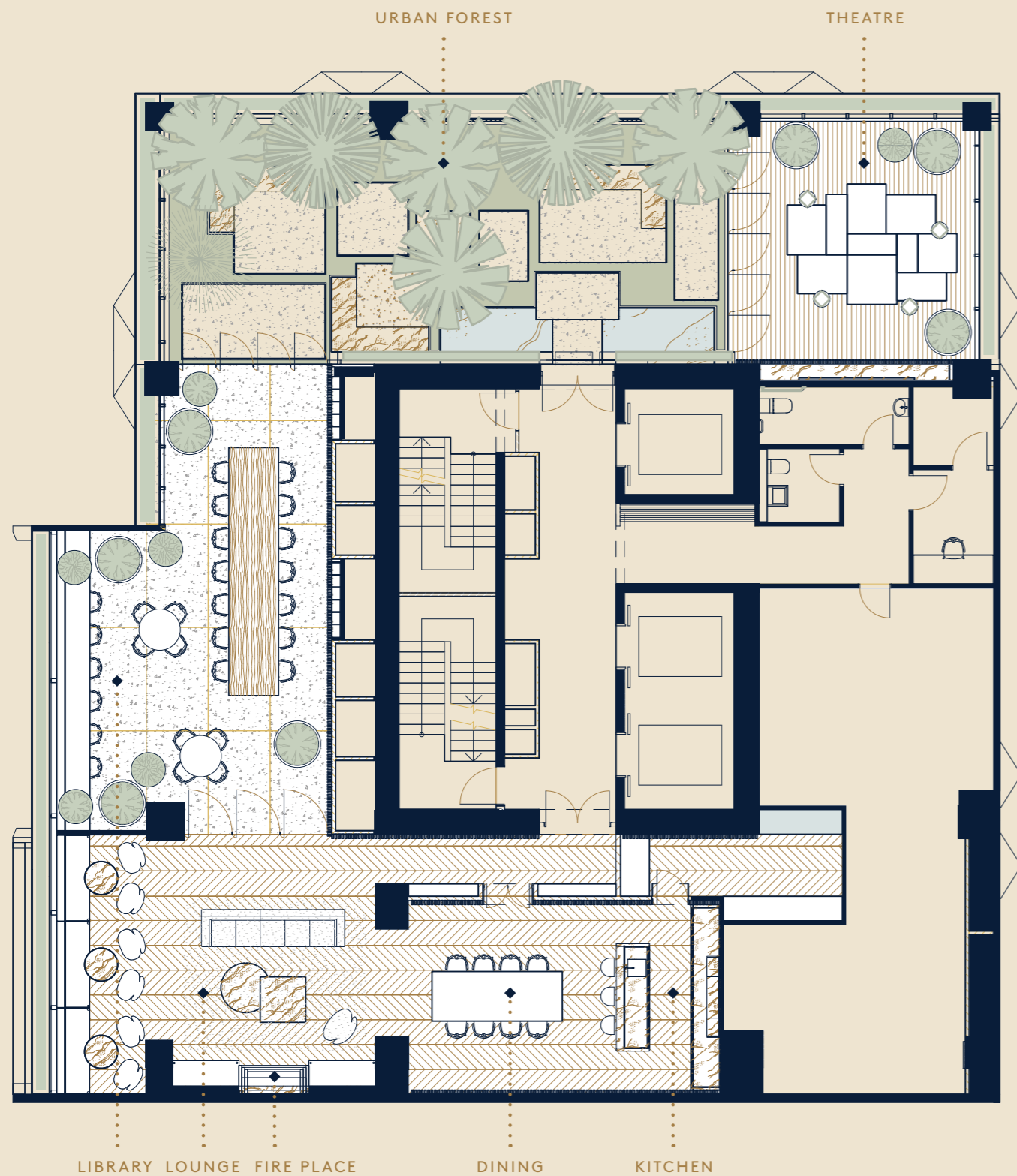
Enveloped in rich materiality, a series of formal and relaxed zones blur the line between public and private domain to present an exclusive entertainer's club for residents to hold meetings, private dinners, cocktails and functions.

A professional kitchen links to the private dining room and also services an indulgently detailed lounge with custom-designed, marble finish surround fireplace and intimate pockets of seating looking across the city.

A lavish material palette of honed marble, ebonised wood and refined vertical batten wall panels surround the space while seductive velvet and leather upholstery, oak flooring and smokey mirror finish add to the moody ambience of the design.

Extending the amenity, a library and private theatre and screening lounge continue the high level of detail and function.

LEVEL 5 RESIDENTS' SPACES



A LIVING OASIS

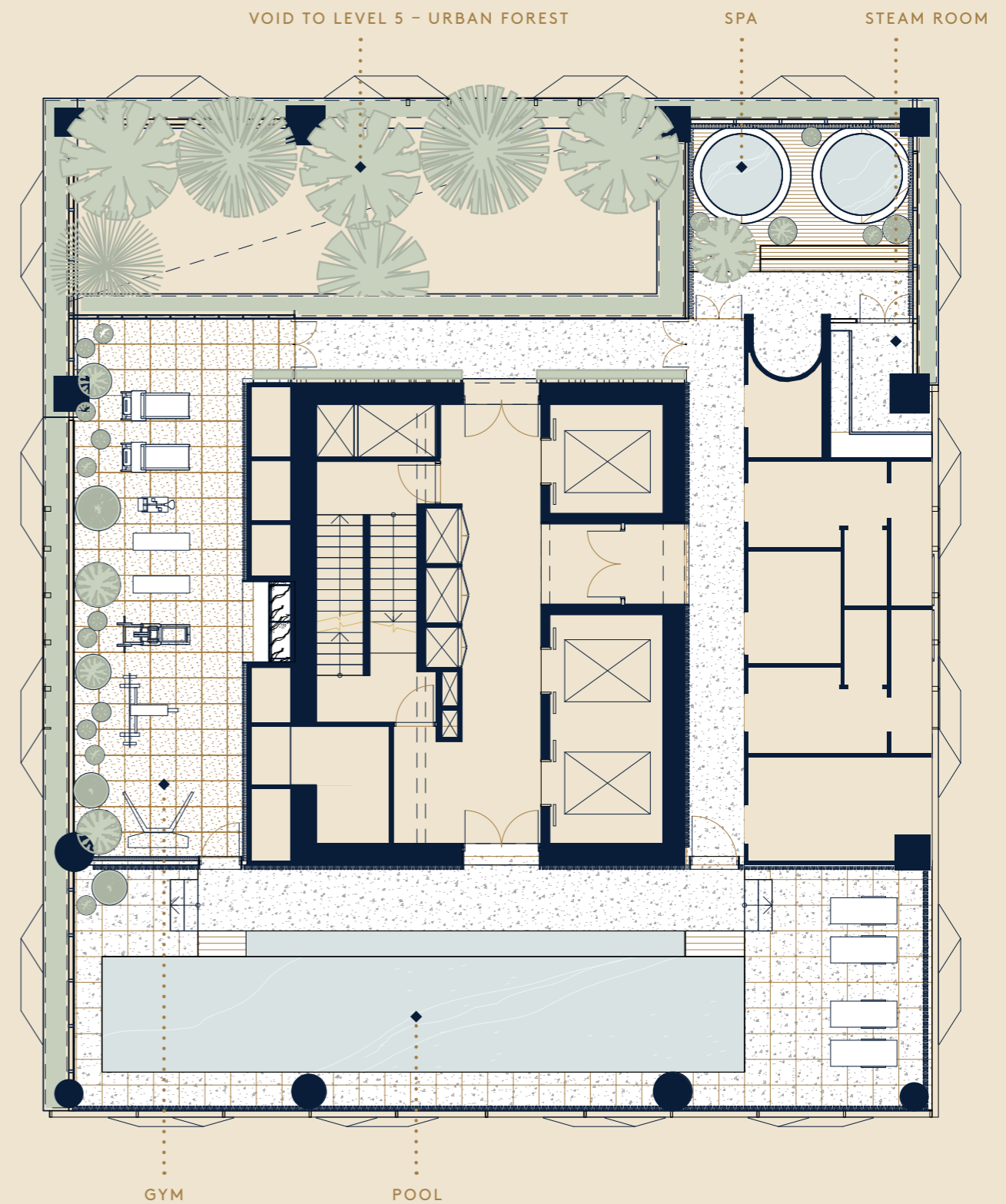
Open the door and step into a lush urban forest. Three storeys high, wrapped in greenery and ascending skywards, a spectacular, light filled atrium is your own private sanctuary, bringing you closer to nature without leaving home.

Refined terrazzo pavers, outdoor seating zones and blackened metal accents ground the space to reference its urban surrounds while a carefully composed selection

of mature trees, leafy canopies, climbing gardens and grassy spaces are part of a perennial microclimate that breathes life into the building.

Settle under a tree with your favourite book, walk the pathways in the dappled sunshine, set up a picnic and watch the world go by. It's a place to find nature, just steps from your living room.

LEVEL 7 RESIDENTS' SPACES



HEALTH & WELLBEING

A multi-sensory urban resort and wellness retreat flows across the entire seventh level.

Embracing views of the city, a fully equipped modern gymnasium with state-of-the-art equipment is a sophisticated fitness zone with refined vertical wall panelling, dramatic, contrasting marble surfaces and gleaming metal accents.

More serene, spa, steam room and bath-house are a gentle, calming presence enhanced by a choreography of natural materials.

Surrounded by soothing, refined vertical wall panels, the 15 metre lap pool with feature terrazzo flooring and designer daybeds.



Artist Impression

A REFINED PERSPECTIVE

Designed to elevate your outlook, architecture engages in panoramic views at every opportunity.

Residences start at level 8 presiding across the treetops, then ascend to the upper levels to sit within a sweeping city skyline.

Façade



Artist Impression

Penthouse living

THE PENTHOUSES

A PRIVATE PARADISE

From their elevated position, the Penthouses are a harmonious balance of centralised city living and an immersive refuge, away from it all.

Commanding the highest degree of design excellence and finesse, the penthouses are defined by volume, sweeping views and stately inclusions. Wrapped in walls of glass, each open plan design is engulfed in natural light.

Defined entranceways lead to gracious living zones featuring a sculptural, spiral staircase ascending to a private, outdoor rooftop terrace.

European oak floors are set against pared back modern design and expansive dining space.



Artist Impression

Penthouse living & kitchen

The three bedroom, three bathroom floorplan also features an additional lounge, media room or studio. At the heart of the home, a professional, entertainer's kitchen is a statement of modern elegance.

Natural marble cascades from across splashbacks to benchtops and a waterfall kitchen island to introduce sophisticated tone and texture to a space surrounded by floor-to-ceiling customised cabinetry finished in a smoked ash timber veneer.

Featuring ample storage, a range of top level Gaggenau appliances and intelligent compartments amplify the substance and style that underpins an exceptional modern living environment.



Penthouse bedroom

Artist Impression

SUITE PERFECTION

Less of a room and more of a serene retreat, the Penthouse bedrooms are saturated in natural light and majestic vistas of the city and beyond.

This private domain is a cocoon of comfort and tranquility, finished with wide linear oak floors and ambient lighting.

The master bedroom includes a spacious walk-in robe and dressing room lined with thoughtful hanging spaces and shelving components.

Soak up the sheer indulgence of a master bathroom that echoes the serene features of a hotel spa.

A free standing bath, dual wash basins and refined organic textures come together in a refreshing, modern space with a focus on wellbeing.



Artist Impression

Living & kitchen

THE RESIDENCES

INTERIOR ACCLAIM

Wrapped in walls of glass, considered architecture opens expansive sightlines to capture the very essence of the location, immersing interiors in natural light and panoramic vistas of Melbourne.

At an address within the heart of the city, interiors have been designed to step away from the busyness below.

Light is cast through glass and reflected across mirrored and polished surfaces to naturally illuminate open spaces within. Organic textures are used across refined forms, complemented by warming timber floor boards and brushed metal surfaces that emit a soft glow in a tranquil environment, a purposeful escape from its metropolitan surrounds.

Floorplans are distinctly larger while modern inclusions are simplified in structure and sophisticated in detail. One, two and three bedroom residences present in various configurations with select designs featuring separate study rooms, ensuites, kitchen islands and private balconies set within the building façade.

Articulated ceilings and crafted joinery are used to gently define the kitchen, dining, study zones and places to lounge. Additional storage with thoughtful compartmental detail is featured throughout. This subtle statement of elegance is upscaled with luxury features, specialist lighting and naturally inspired materials.



Kitchen - Contrast palette

NOURISHING DESIGN

High function kitchens partner generous living zones in a singular statement of premier style and purpose. Created for entertaining and daily dining, the performance-enhanced design also acts as an inviting social space and the heart of the home.

Superior Bosch appliances include wall oven, gas cooktop and rangehood and a Bosch or Smeg dishwasher that are discreetly integrated within expanses of floor to ceiling joinery.

The space is minimalist and relaxed with soft grey joinery to conceal ample storage including deep, soft close drawers and thoughtful pantries.

An expansive mirror splashback increases a sense of dimension within the space and becomes a reflective backdrop to the open shelving and brushed metal finish rangehood that adds another level of sophistication.

The benchtops are slender in form, cascading over the kitchen island bench that serves to extend the work-space, increase entertaining options and unify the open living zone.

Interior colour and material selections present in two options. A fresh take on classic neutrals using light tonal variations, polished gold finish tapware and subtle textural detail or, a more dynamic, modern contrast palette with bold use of natural hues, matte black tapware, emphasized detail and saturated tones.



Kitchen - Neutral palette

INNER PEACE

A restorative space to bring a sense of calm to your daily routine, the bathroom uses inviting and sophisticated textures and tones to enhance a sense of natural beauty.

The floating, deep storage vanity, expansive mirror-front cabinetry, frameless shower and slimline fittings lighten a design grounded by the pronounced use of terrazzo features and large format textural tiles for a refined urban accent.

Select polished gold tapware for a feeling of warmth and luxe or choose bolder matte black contrasts to bring contemporary edge to a classic design.

Open shelving adds decorative detail and allows for adding a personal touch to each space.



Bathroom - Contrast palette

Artist Impression



Bathroom - Neutral palette



Bathroom - Neutral palette



Artist Impression

Façade detail



CHAPTER 03

THE TEAM

FENDER KATSALIDIS ARCHITECTS

ARCHITECT & INTERIOR DESIGNER

Founded on the philosophy of innovation through collaboration, Fender Katsalidis has evolved from a Melbourne-centric architectural practice, to a highly awarded, multi-disciplinary international design firm whose work now influences built environment thinking across the globe.

We seek and deliver holistic solutions in architecture, masterplanning, urban design and interiors; notable for their design quality, civic contribution and economic mindfulness.

To ensure such outcomes remain our hallmark we expose the practice to new and different ways of thinking and extend our expertise far beyond the expected. Fender Katsalidis was a pioneer, and remains a leader, in 3D virtual modelling and building information systems, while the Unitised Building system invented by practice co-founder, Nonda Katsalidis, continues to revolutionise construction timeframes and costs. Perhaps best known for our definitive tall building and public realm design, we are proud of a culture of innovation that has helped shape modern Melbourne.

Paragon transforms perceptions of CBD apartment living. It juxtaposes the old and the new while capitalising on a small footprint within an elevated site.

A slender pencil profile rises with the city skyline, yet allows for only a few residences per floor, to deliver a truly boutique living experience within a high-rise context. The modern structure and refined metal and glass surface treatment makes a striking visual statement that remains sensitive to its environment.

FENDER KATSALIDIS ARCHITECTS



PAUL BANGAY

LANDSCAPE DESIGNER

For 25 years Paul Bangay has fulfilled his clients' aspirations for gardens that are expressive of the timeless elegance and classic simplicity for which he is internationally renowned.

Widely regarded as the foremost garden designer in Australia today, Bangay's clients include a roster of the most prominent figures in business and culture.

His extensive list of projects span private and public commissions in Australia and New Zealand, as well as further afield in Europe, North America and the West Indies.

Bangay holds a Bachelor of Applied Science (Horticulture) from the University of Melbourne. In 1994 he was granted a Melbourne Arts Centre traveling scholarship to further his study of landscape design in Europe and the Americas. He won the Mobil Pegasus Award for the best contribution to the Melbourne International Festival of the Arts (1989). In 2001 Bangay was awarded the Centenary Medal for his contribution to public design projects.

Bangay's distinctive approach has been featured in countless publications, and he is a sought-after guest on gardening and lifestyle programs. His personal insights have informed a successful series of lavish and widely anticipated books, beginning with *The Defined Garden* (1996) and most recently *'The Garden At Stonefields'* (2013).

PAUL BANGAY



BEULAH INTERNATIONAL & FAJARBARU

DEVELOPER

Inspired from the word Beulah and its symbolism of the 'promised land', Beulah International has a vision to deliver high-end residences, with a dedication towards luxury living and exemplary design while creating value for owners.

Award-winning developer, Beulah International believes that considered design can not only deliver liveability and luxury lifestyles, but can also make a positive contribution to the natural environment and the surrounding community.

As well as a keen eye for design, Beulah prides itself on seeing opportunities where others do not. Project locations are in established areas, and project teams comprise only the industry's finest in every aspect of development including architecture, design and on-market service.

In a short space of time, Beulah has established itself as a leading figure in the competitive Australian property industry as an award winning property developer. Rapidly moving from boutique developments to the success of its first major development, Gardenhill, Beulah has a series of high profile projects planned which will continue its mission to deliver exceptional luxury homes.

Beulah International is proud of its reputation for both its innovative approach and absolute integrity at every level. Project partners, owner occupiers and astute investors alike can trust that each decision is carefully considered, and that each project is delivered with absolute commitment.

Listed in Kuala Lumpur Stock Exchange, Fajarbaru has more than 40 years in Construction and Property Development.



318 QUEEN STREET, MELBOURNE

PARAGONQUEENST.COM

FENDER KATSALIDIS ARCHITECTS

PAUL BANGAY



The illustration is for information purposes only. All illustrations and images are depictions or artist impressions only. All illustrations do not constitute any representation or warranty by the vendor or its agents nor does it form part of any subsequent contract of sale. Dimensions, fittings, fixtures, specifications and finishes will be different in each apartment and may be subject to change without notice. Prospective purchasers should make their own enquiries.

© Savi Communications – 2017.

